



DUPLO Build-up & Play toys

1-5 years



DUPLO toys are the fun way for little fingers to learn. Big, chunky bricks, figures, cars and animals can be combined in ever new ways. For full details, look for the special DUPLO leaflet in good toy shops and stores.

Basic Sets

3-12 years



Free, creative building. Basic Sets now come designed for 3 age groups: Basic Starter Sets for 3 years +, Basic Sets for 5+ and Advanced Basic Sets for 7+. They contain a balanced selection of varied LEGO® pieces to give the widest possible scope to the imagination. All show a variety of models on the box to give stimulating building ideas.

See pages 4-7.

Fabuland

3-7 years



Stories you can build. FABULAND® sets contain charming animal figures and large units complete with doors and windows as well as standard LEGO bricks plus story books. The large units make building quick and easy so that the adventures can begin. See pages 8-9.

LEGO

LEGOLAND

5-12 years



Scale models to build and collect. The LEGOLAND® range includes little packs for easy collection as well as bigger models. All models are to the same scale so children can build up a complete LEGOLAND Town, Space or Castle scene. See pages 10-15.

Dolls Houses

5-9 years



Build your very own dolls house. A bungalow, a hospital or a hair-dressing salon, all complete with furnishings and figures. You can take them apart and re-design them just the way you want them. See page 16.

Railways

6-14 years



Trains you build yourself. From the simplest push-along train, through battery operated ones, right up to electric train sets with lights and remote controlled points. LEGO® Railways for train enthusiasts from 6-14 years. See pages 18-21.

Technical Sets

9-14 years



For really experienced builders who enjoy a real challenge. Detailed working models with gears and pistons and drive shafts. Models that work like things in real life. For expert builders who can build from detailed working drawings. See pages 22-24.



The toy that lasts right through childhood

LEGO[®] bricks are so simple to clip together yet so endlessly versatile that they meet the needs of children from about 3 years right up to 12 years and more.

Of course, as children get older they become more imaginative, more clever with their hands and demand more realism and detail in their models.

That is why the range of LEGO sets is carefully designed to meet the changing abilities and interests of different ages. All LEGO bricks fit together which means that as children grow into more advanced or detailed components, they do not grow out of the simple ones.

They just go on building. Year in. Year out. But always it is a new toy every day.

From 3 years

Basic Starter Sets

The ideal way to start a LEGO collection. A good selection of assorted, colourful bricks for an endless variety of simple models. Wheels, windows, doors and little figures give added scope to the imagination.

All boxes show ideas for models to start the imagination working.



366 New**
Basic Set from 3 years

Supplementary Boxes: See page 17.



355 New**
Basic Set from 3 years

333 New**
Basic Set from 3 years

333 New**
Basic Set from 3 years

322 New**
Basic Set from 3 years

322 New**
Basic Set from 3 years

* New from May. ** New from July.

From 5 years



Basic Sets

From 5 years children start to be able to handle smaller components so now these sets have roofing bricks, flowers, window shutters and little figures with arms and legs which move, as well as a good selection of bricks. Set 577 even has a sturdy little wind-up motor for moving models. This can also be bought separately in pack 890.

All boxes show many ideas for models to start the imagination working.



577 New**
Basic Set from 5 years



566 New**
Basic Set from 5 years



555 New*
Basic Set from 5 years



544 New*
Basic Set from 5 years



890 New*

Wind-up motor
Models are much more fun when they move on their own. This simple but sturdy little motor can be wound up with a key or by pulling it backwards first.

From 7 years



Advanced Basic Sets

Children of this age become increasingly interested in making their models look realistic. So now the sets include small specialised items like hinges, rotors, crane jibs, and aerials. There is a battery motor for powered models in the 744 set, or on its own in set 107. In addition to pictures on the boxes for ideas there are instructions for a few of the more advanced models in each set, just to set the children on the right track.



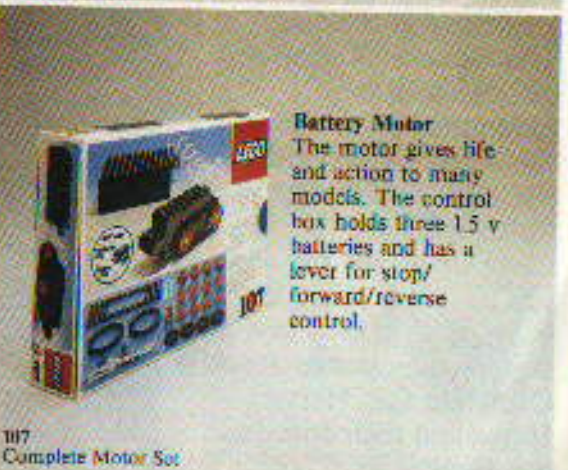
744
Advanced Basic Set from 7 years with battery motor



733
Advanced Basic Set from 7 years



722
Advanced Basic Set from 7 years



107
Complete Motor Set

Battery Motor
The motor gives life and action to many models. The control box holds three 1.5 v batteries and has a lever for stop/forward/reverse control.

Fabuland

3-7 years



Stories you can build

FABULAND® sets are a unique combination of two childhood favourites – stories and building. The model sets contain stories about the adventures of the animal characters which children can then build and act-out for themselves.

Large units plus standard LEGO bricks make the building quick and easy so that exciting stories about Catherine Cat, Harry Horse and their friends can begin.



3611 New*
Edward Elephant's
garden table



3612
Lisa Lamb's pram



3603 New*
Doris Bulldog,
postman



3644
Mark Monkey's
fruit stall



324
Ricky Raccoon's
scooter



325
Percy Pig's
wheelbarrow



3628 New*
Window cleaners



3634
Joy Crow's dustcart



3629 New*
Bruno Bear's car



3635 New*
Mobile home



347
Hospital with Doctor Dog and Lucy Lamb

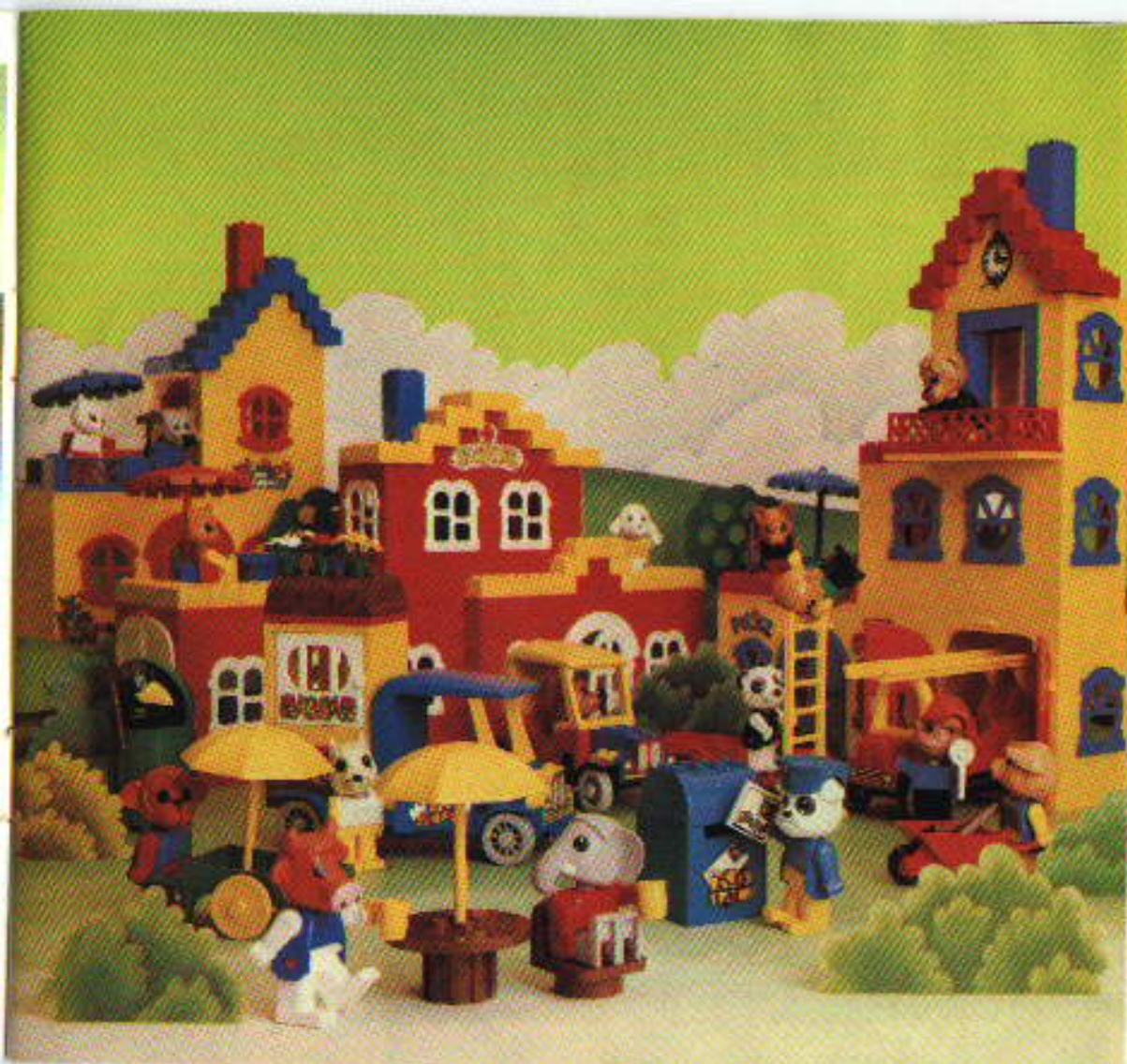


344
Service station with Billy Goat and Mike Monkey



350
Town Hall with Leonard Lion and friends

* New from May.



341
House with Catharine Cat



338
Taxi station with Patrick Pig



3665
Ice cream shop with Clam Cow

LEGOLAND

5-12 years



607
Dumper



608
Taxi



609
Beach buggy



6610 New
Shell petrol pumps



6611 New
Fire Chief's car



625
Tractor digger



6627
Roadster



6628 New
Tow truck



6629 New
Red Cross car



645
Police helicopter



646
Auto service



6647
Road works tractor



6650 New
Fire truck

LEGOLAND[®] Scale models to build and collect

Build your very own LEGOLAND Town, go adventuring into the future with LEGOLAND Space or back in time with LEGOLAND Castle. Three great play ideas that are fun to build and fun to play with. Many small packs make collecting easy so that there is always something exciting and new in LEGOLAND. LEGOLAND Town includes roadplates, vehicles, buildings and lots of little people, all to the same scale. Every pack contains full instructions and shows ideas for other models built from the same bricks. That's LEGO versatility.



376
House with garden



377
Service station



379
Bus station



671
Petrol tanker

675
Snack bar

6678
Mechanical grah

6680 New
Ambulance

6681 New
Police van



361
Garage



6690
Fire hoist



6691 New
Red Cross helicopter



6305
Trees and flowers



6306
Road signs



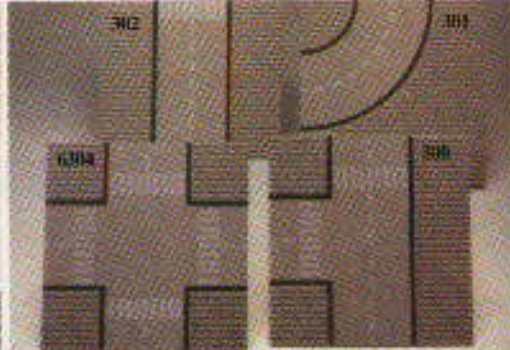
6363
Breakdown unit



6364
Medical centre



6365 New
Cottage



302
2 Straight road plates

301
2 Curved road plates

6304
2 Crossroads

300
2 T junction road plates



6382 New
Fire station



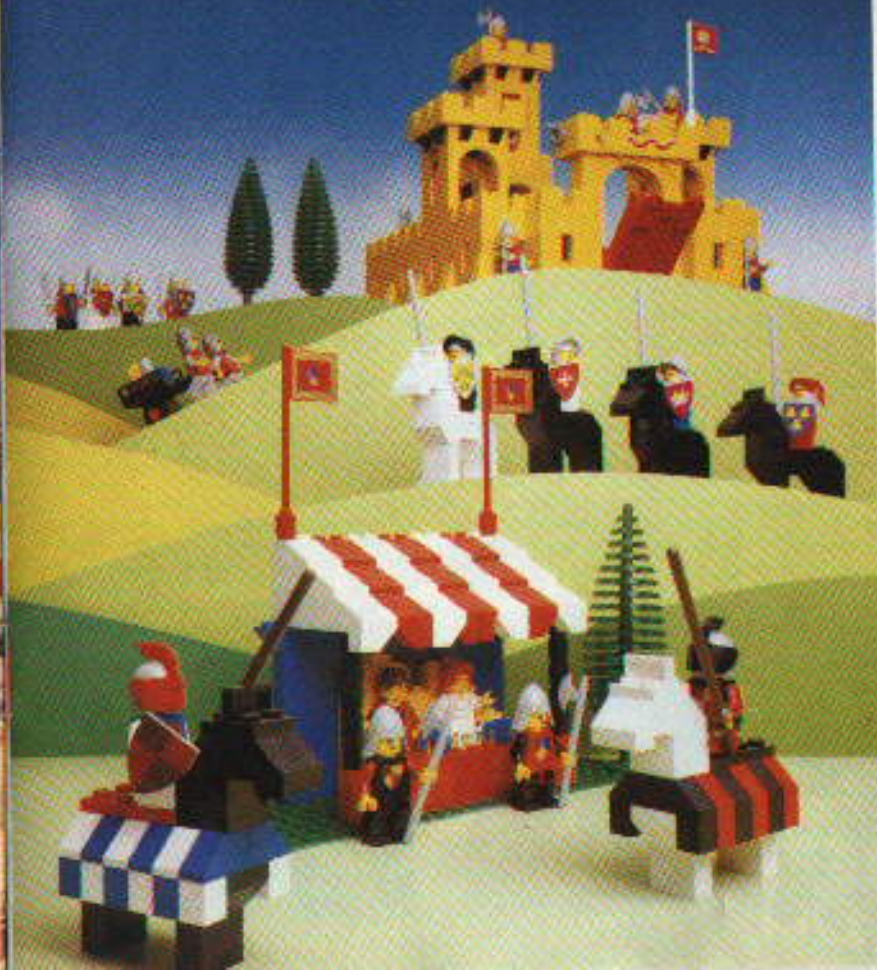
381
Police headquarters

LEGO AND Ideas Book
Full pages of ideas,
instructions and
inspiration for new
models in
LEGO AND Town,
Space, and Castle.
Ideas to really set
your imagination
working.



6900

LEGOLAND Castle



375
Castle

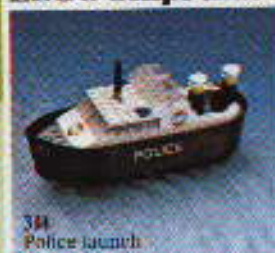


383
Knight's tournament



677
Medieval knights

LEGO Ships that float



344
Police launch



336
Fire fighting launch

5-12 years



Explore new worlds with LEGOLAND Space

Space ships, rocket launchers, tracking stations and astronauts. They are all there in the exciting galaxy of LEGOLAND Space. There are even special crater plates and launch pad bases to help you build a complete scene from another world. And the adventures you have there? That is up to you!



928 Space cruiser and launch pad



6970 New* Command centre



6841 Survey vehicle



6842 New* Inspection spacecraft



920 Rocket launching pad



6929 New* Space transporter



6821 Lunar rock collector



6822 New* Space grab



6870 New* Spacecraft launcher



897 Mobile rocket launcher



6927 'New'
Mobile tracking station



918
One-man space sled



886
Space huggy



6801 'New'
Space scooter



305
Crater plates



306
Landing strip/
roadway

5-9 years



Dolls houses you build yourself

A bungalow, a hospital, a hairdressing salon, all with figures, furnishing, opening doors and windows. What more could you want? Except to want it different tomorrow. And with LEGO Dolls Houses you can do just that. Change them around until they look just the way you want them. Perhaps this room should be a little longer? And how about moving both windows onto that wall...?





820 Red plates



822 Blue plates



830 Red bricks



831 Black bricks



832 Blue bricks



833 White bricks



834 Yellow bricks



836 Doors and windows



837 Wheels



838 45° Roofing tiles



839 27° Roofing tiles



970 Lighting bricks with colour filters



Supplementary Boxes

Do you sometimes wish you had a few more bricks or roofing tiles or windows? These little supplementary boxes are just for that purpose. To help you finish off a special model or just to add to your collection. And if you sometimes get stuck for ideas then the new LEGO Building Book is just the thing. It has **hundreds** of ideas for new things. And instructions too.

6-14 years



LEGO Railways New from September

Building models is fun. Playing trains is fun too. With LEGO Railways you do both, so that's double fun. And you can build LEGO people inside the carriages, just like they ought to be.

You can have everything from an Electric inter-city express to a Battery train or even a push-along one. The new LEGO transformer/controller gives all the excitement of remote-controlled points and signal lights. And the whole system is designed so that you can convert locomotives and rails from battery to electric whenever you want.



7749
Electric inter-city train set, 12 V



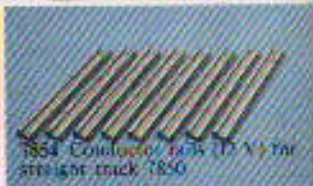
7725
Electric passenger train set, 12 V



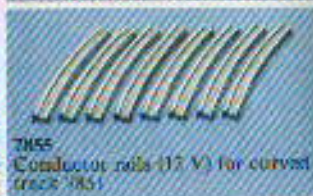
7864
Electric transformer/controller (12 V)



7865
Electric motor unit (12 V)



7854
Conductor rails (12 V) for straight track (7850)



7855
Conductor rails (12 V) for curved track (7851)



7867
Electric crossing (12 V)



7861
Electric lighting set (12 V)



7863
Electric remote controlled points motor (12 V)



7856
Electric points (12 V)



7860
Remote controlled signal with isolating track (2 V)

Different Railways for different ages

You can start your railway collection with a simple push-along train or battery operated ones, adding extra rails, points and crossings as you go. The push-along train can be converted to battery power and the battery powered trains to electrical power when you are ready for it, so you do not have to discard one system to advance to another. A special LEGO Railways Ideas Book is crammed with ideas for models and track layouts to help you get the full play value from your trains.



7700
Battery train set, 4.5 V



7816
Shell tanker



7710
Push-along train, without Motor



7814
Breakdown crane



7822
Railway station

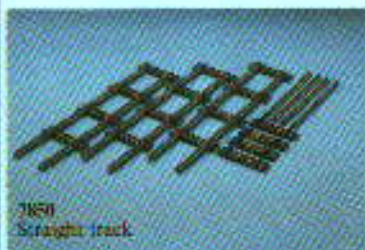
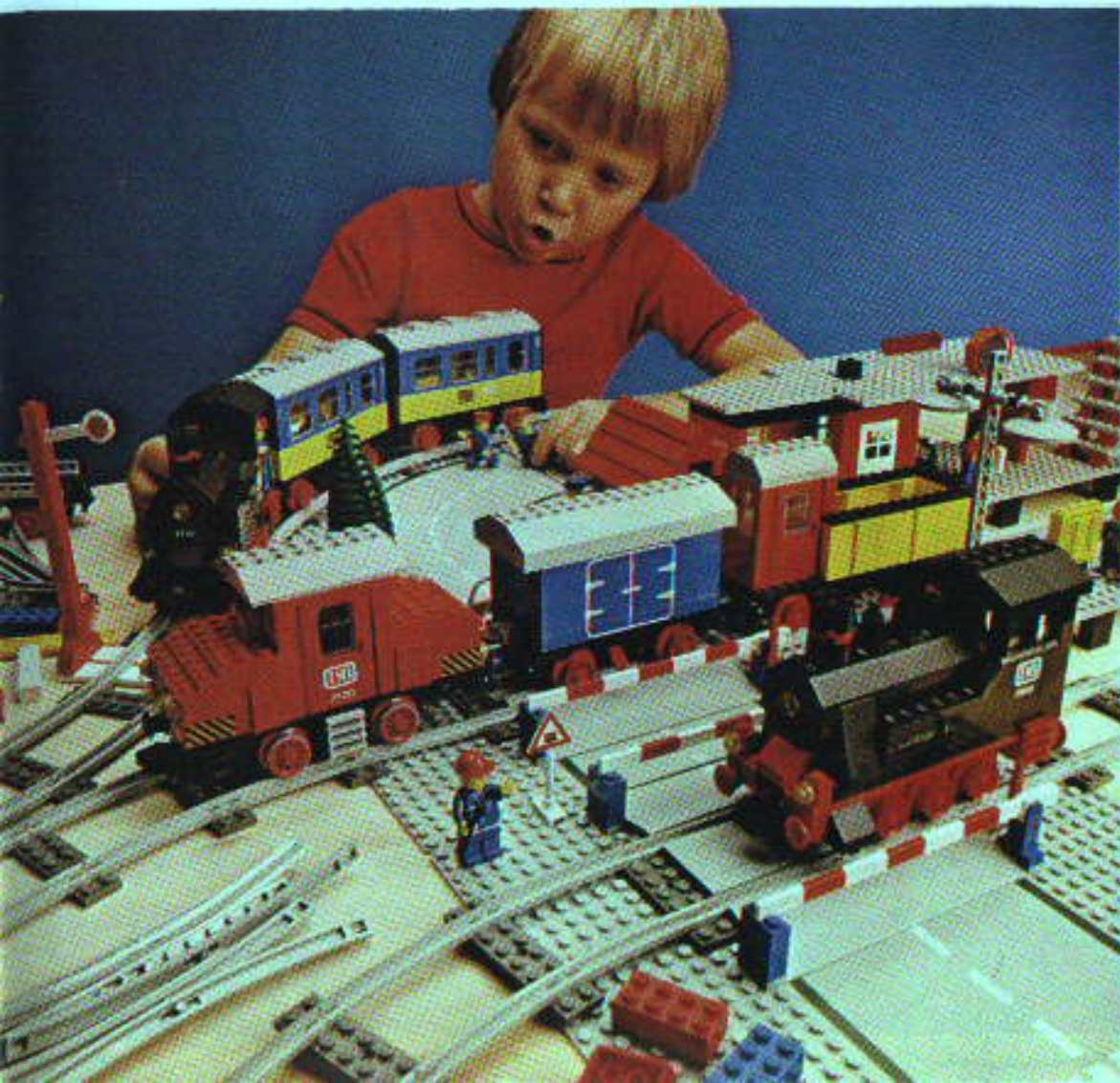


7834
Level crossing



7777
Ideas Book

* All new from september



7850
Straight track



7851
Curved track



7853
Crossing (for battery
train only)



7852
Points (for battery
train only)

9-14 years



8541
Car chassis



856
Bulldozer



859 New*
Tractor



8548 New*
Tipper lorry



855
Mobile crane



8844 New*
Helicopter

Technical Sets for experienced builders

LEGO Technical Sets are for skilled builders of 9 and over who enjoy the challenge of creating realistic detailed working models. Working pistons, differential gears, steering mechanisms and power transmission are just some of the impressive features to be found in these Technical Sets. Detailed construction diagrams are included in each set and now there's a new Technical Ideas Book to help you design working models of your own.

* New from September



8845 New
Buggy buggy



880
Fork lift truck



854
Go-kart



874
Yellow beams



875
Red beams



876
Blue beams



877
Steering gear parts



878
Piston parts



879
Gear wheels and
chain links



8888
Technical Ideas Book - 100 pages



870 New
Assorted Technical
components

880
12 V Technical motor
(for use with 1.56-1)
transformer)

872
Gear blocks for easy gearing down

876
Battery Technical motor

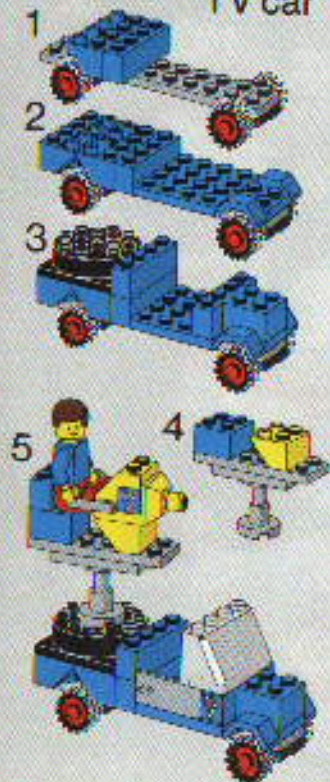
841
12 V Technical transformer



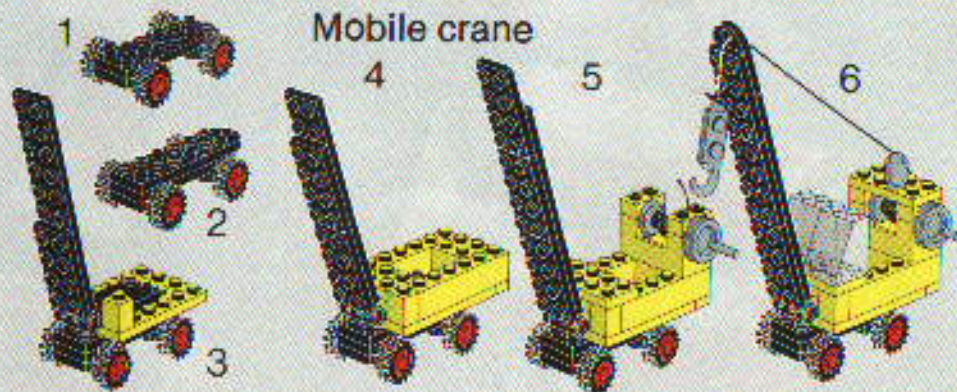
Some simple building ideas

The models you design yourself are always the most satisfying, but here are suggestions for 7 very different sorts of models to start you off. If you do not happen to have the particular bricks shown, then adapt the models to the bricks you have. They will end up different to the pictures but perhaps even better...

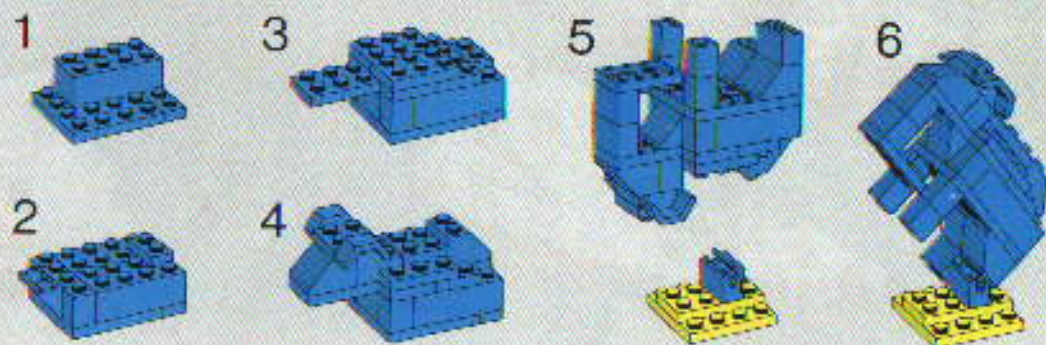
Outside broadcast TV car



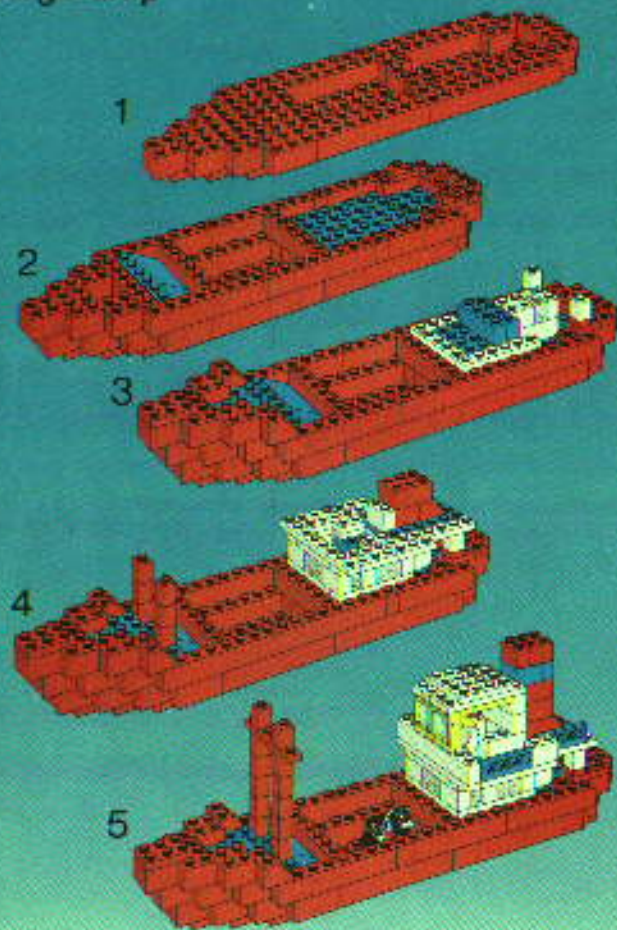
Mobile crane



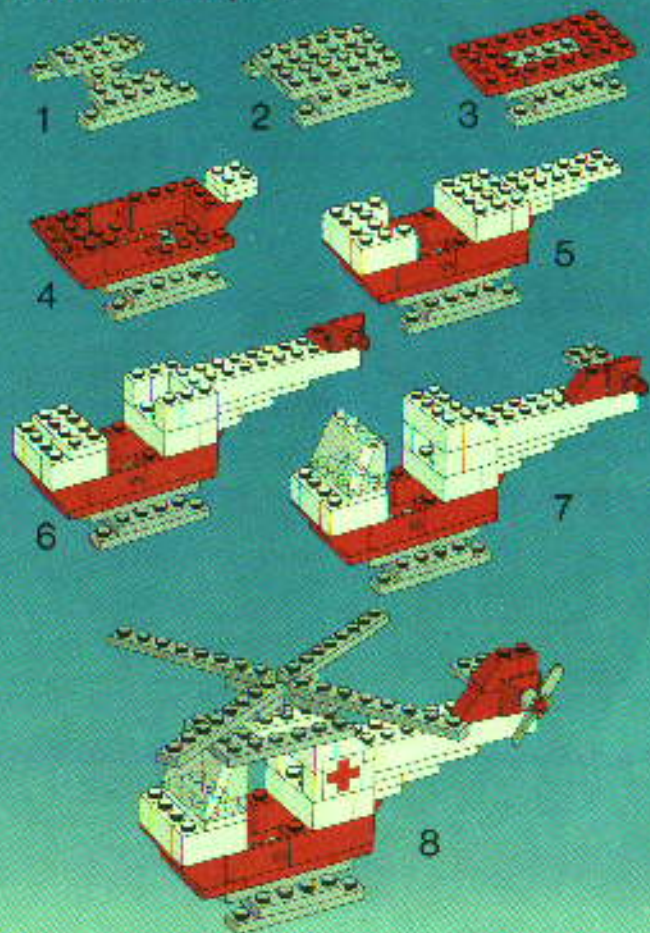
Circus elephant

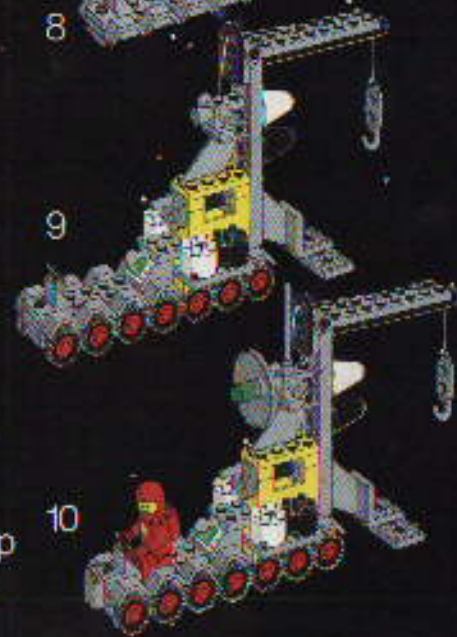
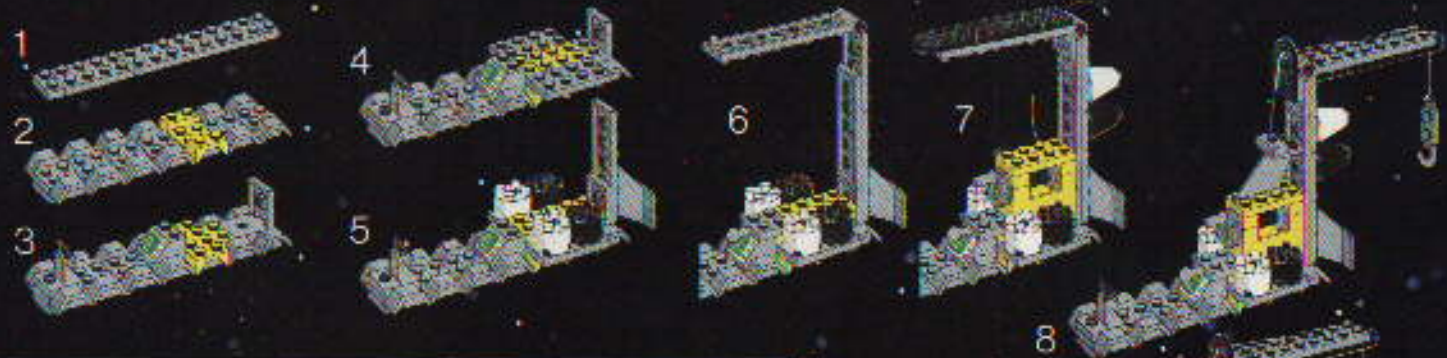


Cargo ship

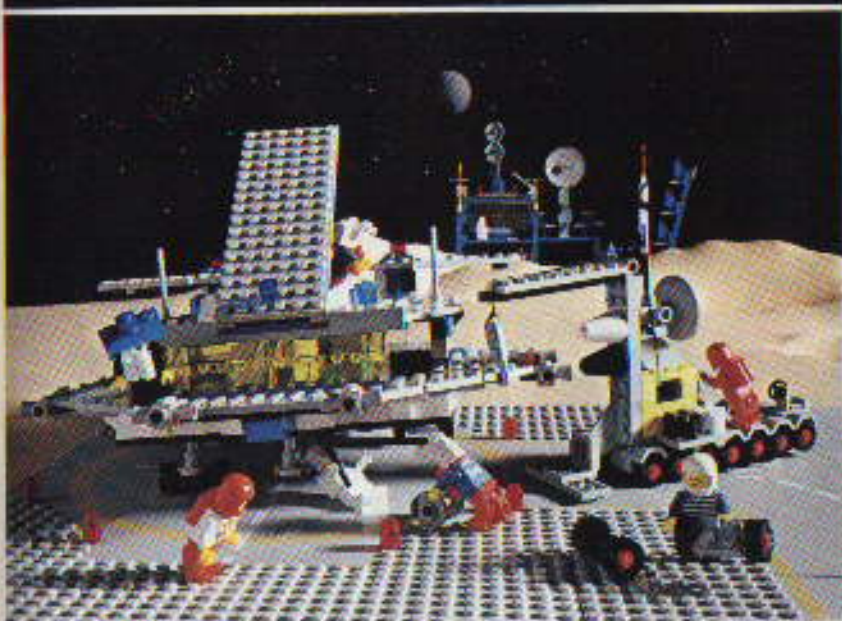


Rescue helicopter

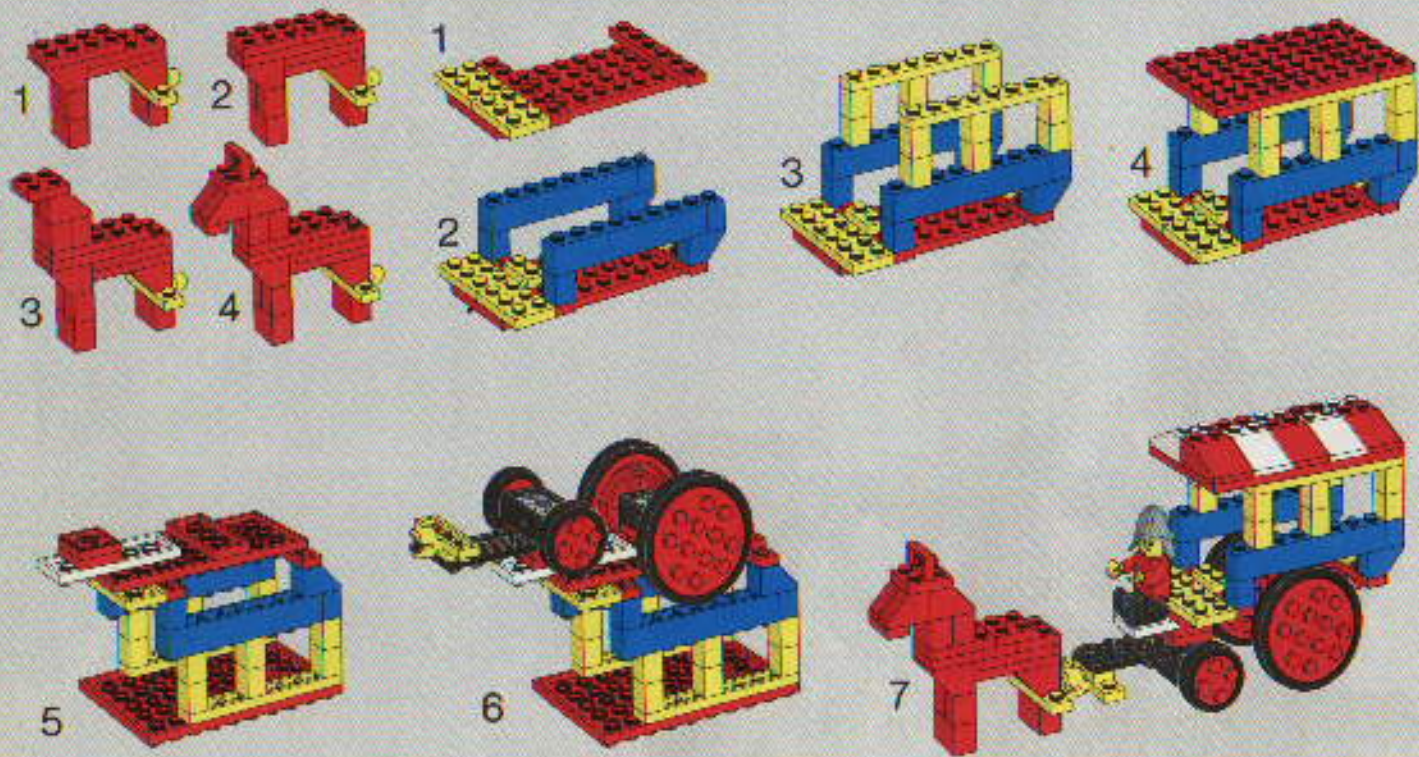




Spaceship servicing vehicle



Medieval carriage



LEGO

Spares Service

If you lose a special part, or want an extra one this service can help you.

With well over 1000 components in the LEGO range we cannot offer them all but here is a selection of the ones you are most likely to want.

Please note that we cannot supply complete LEGO sets. These can only be purchased from toy stores in the normal way. But if you particularly need a component not shown here, write to us and we will help if we can.

The Spares Service applies to After that you receive 3 Club newsletters during the 12 months. These give hot news about new sets, ideas for models and pictures of Club Members' own models. There are competitions for LEGO set prizes and Master Builder Awards (yes, girls can become Master Builders too of course) and there are Special offers from time to time exclusive to members. If your mum or dad agrees, why not fill in this Registration Slip and send it with your £ 1.25 membership fee right away. Please Note: Club mailings can be posted to addresses in U.K. and Ireland only.



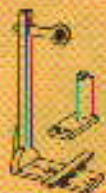
1101 £ 3.90
Replacement
"LEGOELECTRONIC" power
unit for 107 type battery
motor



1105 £ 0.55
7 rubber crawler tracks



1102 £ 0.37
4 bushes to hold wheels
in motor



1107 £ 1.30
2 shunting trip-posts and
1 signal. For use with
1134



£ 0.57
2 motive wheels



1103 £ 2.40
Battery box



1108 £ 1.15
2 pairs of magnetic
couplings



1115 £ 0.65
Lighting brick for use
with 1103 and 1104



1104 £ 0.72
2 connector leads,
150 mm and 100 mm



1109 £ 1.15
2 pairs of magnetic
couplings for special
train bases



1119 £ 0.35
2 piston assemblies for
locomotives



1121 £ 0.57
Propellers, wheels and motor unit for planes and helicopters



1122 £ 0.42
1 big and 2 small hinges



1123 £ 0.37
3 half and socket couplings and 1 articulated joint



1124 £ 0.77
Digger bucket assembly



1125 £ 0.62
Crane grab assembly



1129 £ 5.00
Denim Speed Bag. Lies flat for playing on. A tag on drawing scoops up bricks for easy storage.



1130 £ 2.95
Binder with clear plastic pockets. For keeping building instructions



1131 £ 0.45
2 large tyres, 42 mm with crosshubs



1132 £ 0.40
4 tilting bearings. For angling radar dishes etc.



1133 £ 0.42
4 hinges



1134 £ 4.35
1 battery tender



1138 £ 0.32
8 rubber wheel rims for loco wheels



1139 £ 0.46
1 motor frame + coupling



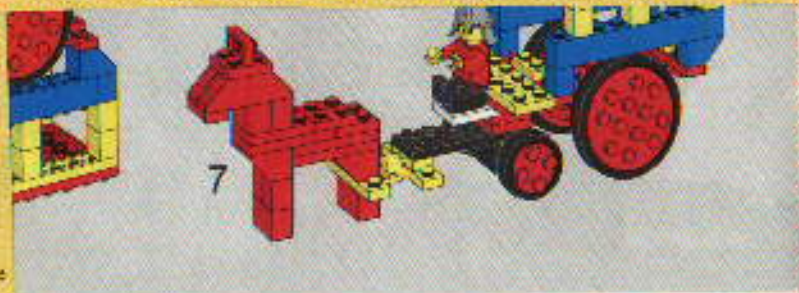
1148 £ 0.60
1 differential gear. For use with Technic Sets



1149 £ 0.80
Chain link tracks for use with Technic Sets

Spares Order Form

To: CONSUMER SERVICE LEGO U.K. Limited, Wrexham, Clwyd LL13 9UH





Join the LEGO Builders Club

Many thousands of children are already members and you can join too.

A membership fee of £ 1.25 for each child gives membership for 12 months from the date of joining. By return you will get a membership pack consisting of a handsome badge, certificate, satchel stickers and a sew-on badge for your jeans or T-shirt.

After that you receive 3 Club newsletters during the 12 months. These give hot news about new sets, ideas for models and pictures of Club Members' own models. There are competitions for LEGO set prizes and Master Builder Awards (yes, girls can become Master Builders too of course) and there are Special offers from time to time exclusive to members.

If your mum or dad agrees, why not fill in this Registration Slip and send it with your £ 1.25 membership fee right away.

Please Note: Club mailings can be posted to addresses in U.K. and Ireland only.

Please enrol me as a member

To, **The LEGO® Builders Club**
P.O. Box 2, Liverpool, L4 1UR

PLEASE PRINT CLEARLY

First name

Family name

House/Street

Town

County Postcode

I am a boy/girl and I was born on Day Month Year

A cheque/postal order payable to LEGO U.K. LTD. for £ 1.25 for 12 month membership is enclosed

Signature of parent or guardian



It's a new toy every day

Dealer's name